

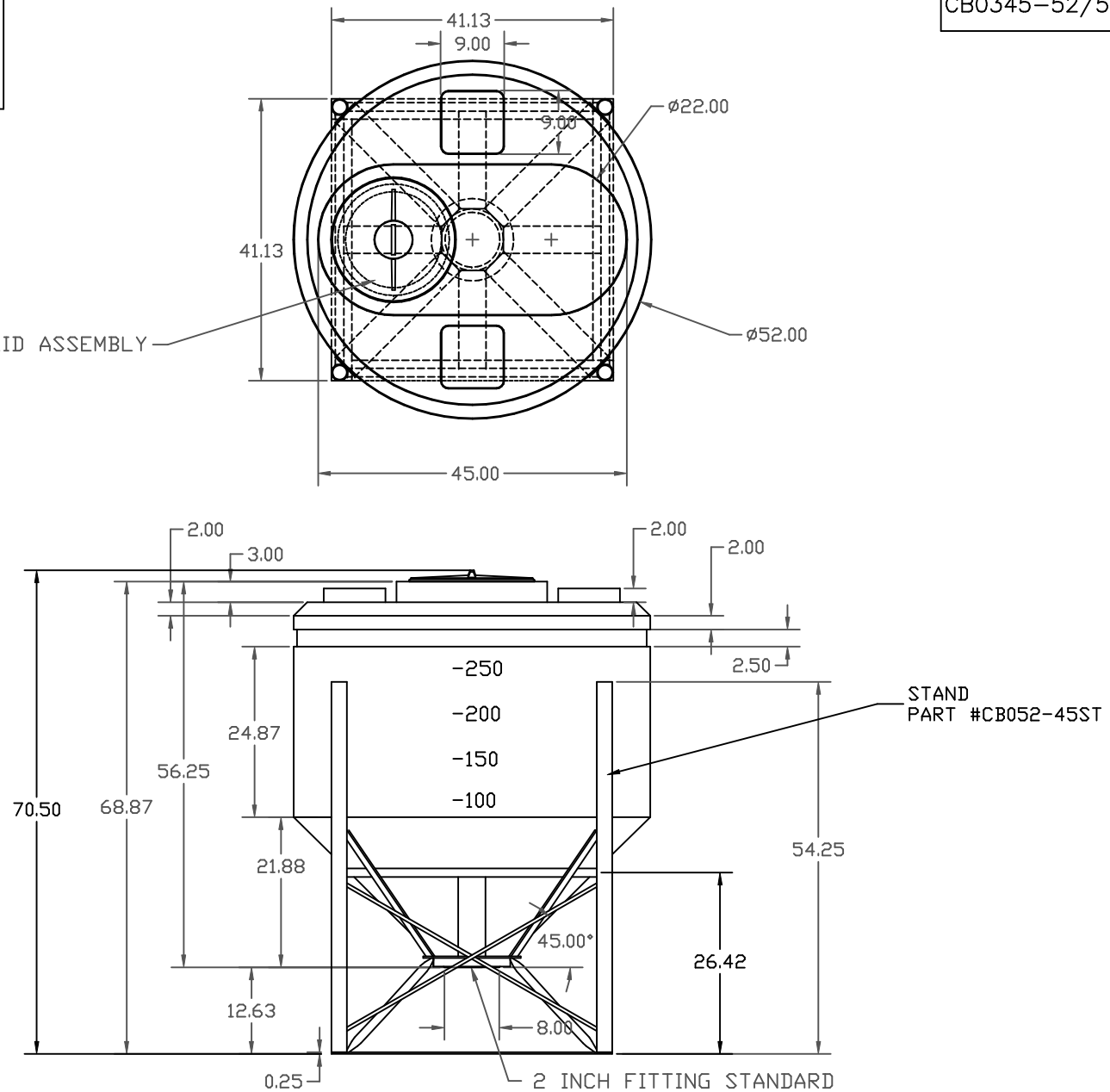
PROPRIETARY DATA

CB0345-52/52-45ST

E

PROPERTY OF DEN HARTOG INDUSTRIES, INC. INFORMATION FURNISHED HEREIN IS THE PROPERTY OF DEN HARTOG INDUSTRIES, INC. AND SHALL NOT BE USED, DISCLOSED TO OTHERS, OR COPIED WITHOUT THE EXPRESSED WRITTEN CONSENT OF DEN HARTOG INDUSTRIES, INC. ALL RIGHTS RESERVED.

12" VENTED LID ASSEMBLY



STAND
PART #CB052-45ST

2 INCH FITTING STANDARD

E	REMOVE TOL. 1% @ 68° F	3/9/07	GWC
D	CHANGED PN, UPDATED PRINT	5/17/06	NVE
C	CHANGE PART NO. TO CB0345-52	10/5/04	
B	ADD FITTING INFORMATION	10/5/04	
A	FINALIZE PART	9/15/04	
REV	DESCRIPTION	DATE	APPRD

DRAWN / DATE	MATERIAL
DHJ / 08/17/04	TANK: HDPE OR EQUIVALENT STAND: MILD STEEL
APPRD. / DATE	
REH 4/18/07	



ACE ROTO-MOLD

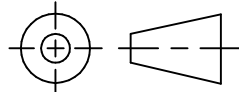
A DIVISION OF DEN HARTOG INDUSTRIES, INC.
4010 HWY. 60 BLVD, BOX 425, HOSPER, IOWA 51238

CLIENT / DESCRIPTION

345 GALLON CONE BOTTOM TANK AND STAND

ALL DIMENSIONS ARE IN DECIMAL INCHES
TOLERANCES UNLESS OTHERWISE SPECIFIED

THIRD ANGLE PROJECTION
ANSI 14.5M



NOTES:

1. TANK WEIGHT 100 LBS.
2. STAND WEIGHT 174 LBS
3. TANK NOM. WALL .250

SCALE

N.S.

PART NO.

CB0345-52/52-45ST